

# THE WESTERN AUSTRALIAN ORCHID BULLETIN

THE OFFICIAL JOURNAL OF THE ORCHID SOCIETY OF WESTERN AUSTRALIA  
FOUNDED 1946. A MEMBER OF THE AUSTRALIAN ORCHID COUNCIL.

VOLUME 62 No 5



MAY 2022

The next meeting of the Orchid Society of Western Australia (Inc.) will be held at the Manning Senior Citizens Activity Centre, Manning, on **Friday 27 May, 2022.**

**PATRON: Mr. Trevor Burnett**

**PRESIDENT**

Lina Pacca  
Ph. 0419 917 487

**SECRETARY**

Harry Ashton  
harry.ashton@live.com.au  
Ph. 0412 403 696

**TREASURER**

Sheelagh Harman  
sheelagh4@bigpond.com

**REGISTRAR**

Malcolm Davis and Enid Chelva

**BULLETIN EDITOR**

Murray Baker

**FACEBOOK PAGE**

Kirsty Bayliss

**POSTAL ADDRESS**

58 Gladstone Rd  
Leeming 6149

[www.orchidsocietywa.net.au](http://www.orchidsocietywa.net.au)

[www.facebook.com/orchidsWA](https://www.facebook.com/orchidsWA)

## THIS MONTH'S MEETING

DARRYL HARDIE

BUGS

## JUNE MEETING DATES

OSWA Committee: 7:30 pm Friday 3rd

General Meeting: 7:30 pm Friday 24th

## INSIDE THIS ISSUE

General News	2-5
Cultural Notes - Cymbidium	5-6
Cultural Notes - Cattleya	6
Cultural Notes - Paphiopedilum	6
Minutes	7
Monthly Plant Competition	8

**We acknowledge assistance from Lotterywest for the printing of this Bulletin**

OSWA disclaims all liability for losses that may be attributed to the use of any material mentioned in this Bulletin. Opinions expressed in the Bulletin are not necessarily those of OSWA.

## Attendance at OSWA Meetings during the time of COVID

- The State Government has relaxed many COVID-related rules. Consequently, wearing of masks and proof of vaccination are no longer mandatory at OSWA meetings.
- The number of cases of COVID in the community is high. Since most of our members are elderly and therefore at greatest risk of serious COVID infection, it is in our own interest to continue to take practical precautions (masks, physical distancing, hand sanitizer).
- For the May meeting, the kitchen will remain closed and there will be no supper, but members are welcome to bring their own tea or coffee in a thermos.

### Birthdays

May: 1st Katia Stefanova; 4<sup>th</sup> Jacqui Bateman; 7th Dorothy Walton; 8th Calvin Hisco; 9th Ellen Dixon; 10th Colleen Cortenbach

June: 2nd Tom Seaman; 5th Michele Hay; 10th Val Dobrowolski; 17th Maggie Longmore; 23rd Donna Cardinal

Best wishes to anyone else celebrating Birthdays or Anniversaries. To any member on the sick list we wish you a speedy recovery & may you soon be well.

### Neutrog Store

The online store is now closed for Winter orders. Delivery is expected some time around 3 June. If you placed an order, Murray will contact you when your order is available for you to collect.

Remember, to obtain Neutrog products at special club rates, you need to be registered with the Neutrog Online Store (not just the Poo Bah Club) and your membership of OSWA needs to be current.

### New Member

Welcome to Lea Marlow (Kardinya). We hope you have many rewarding years ahead with our Society.

### New Members: how to get your three free orchids.

New members are eligible to receive three free orchids. If you are a new member, you should receive a letter about how to receive your free orchids. If you have not received your letter, contact Courtney at a meeting or on 0407 049 717.

Conditions for granting of 3 free orchids with your first year of membership include, but are not limited to:

- You must contact Courtney several days before the meeting where you want to collect your plants.
- The offer is only available for 12 months from the time you join the club, **or while stocks last.**
- First in best dressed.

### Streamlined Meeting Format and more raffle prizes

Members will be pleased to learn that to make our general meetings more enjoyable, we will no longer be discussing routine correspondence and financial matters that are routinely dealt with by committee. If you are interested in such matters, they will be posted on a noticeboard during meetings for you to inspect. To make general meetings even more enjoyable, we will be making an effort to provide more raffle prizes each month. so be sure to buy your raffle tickets and avoid disappointment.

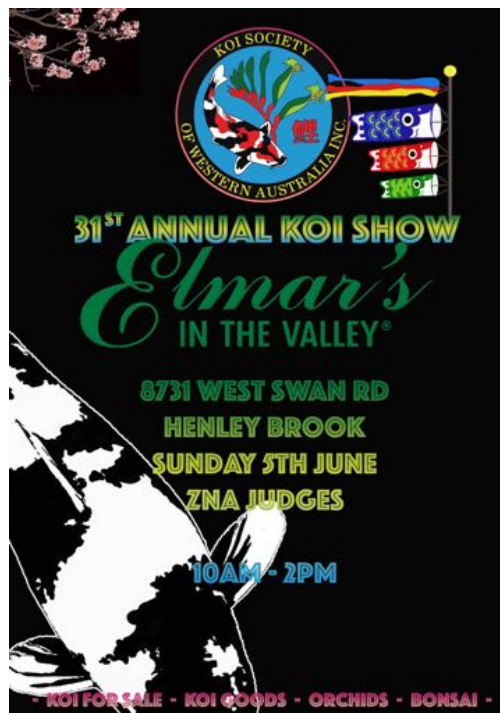
### Floraplant Nursery Visit: Saturday 10 September

Trevor Burnett has kindly arranged a visit to Floraplant Nursery for OSWA members on Saturday 10 September. Due to insurance issues this event is only open to OSWA members and no guests are allowed. Members must wear their badges. More info in the August bulletin.

## Koi Society Show: Elmar's in the Valley

**Sunday June 5th, 10am-2pm**

OSWA will have a stand at the Koi Show again, but this year we will also have a sales table! The venue is Elmars in the Valley ([elmars.com.au](http://elmars.com.au)), 8731 West Swan Road, Henley Brook. This event is not your usual orchid event but the koi are pretty interesting and it is fun to see folks as enthusiastic and fussy and nerdy about fish as we are about orchids. Many of the koi enthusiasts like orchids too. This year the Koi Society has kindly allowed us to have a sales table, so if you have excess plants please consider offering them for sale and helping at our sales table and display on the day. Even if you don't have anything for sale, consider making a trip up to the Swan Valley for the day, to spend an hour looking at the koi, some time at the OSWA stand, and maybe lunch at Elmars, sampling the products of their German brewery. More info (about the Koi Show, not the brewery) at the May general meeting.



## Club Plant: *Brassia Rex* 'Sakata' FCC AOC

OSWA has purchased *Brassia Rex* 'Sakata' FCC AOC for sale to members attending the May monthly meeting. *Brassia Rex* is a primary hybrid of two *Brassia* species from central America, *Brassia verrucosa* and *Brassia gireoudiana*. The letters after the plant name (FCC AOC) are in recognition of this particular clone ('Sakata') being awarded a First Class Certificate (the highest award an orchid can receive) from the Australian Orchid Council (in 2014). The cost of these plants is being subsidised by the club and so they are available for the excellent price of \$6 each, one plant per membership.



## Upcoming Events (*updated!*) for your Calendar

- **Koi Society Show:** Will be a Sunday 5 June, 10 am - 2 pm. There will be an OSWA sales table.
- **Intersociety Orchid Display and Workshop:** 6-7 August in Busselton.
- **Kardinya Spring Show:** Setup, Tue 30 August; Show, Wed 31 August to Sat 3 September.
- **Floraplant Nursery Visit:** Saturday 10 September, starting 9 am sharp.
- **Potting Workshop:** Sunday 16 October
- **Perth Garden Festival:** 27-30 October (setup 25 and 26 October?)
- **Late Flowering Orchid Display:** 12 and 13 November (Saturday and Sunday)
- **Home visits?** Let Harry or Lina know if you would be happy to host a home visit.
- **Christmas Dinner:** Bentley Pines (same as last year), 9 November 2022, from 7 pm.

## Where to buy orchids and orchid-related paraphernalia

We are compiling a list of vendors that sell orchids or orchid-related items (pots, stakes, watering equipment, benches, shade houses, shade house covers, special shade cloth, devices for climate control...). If there are things that you'd like for your orchid hobby but don't know where to get them, let Murray know and he will do his best to track down a supplier (or at least find someone else who can track down a supplier). The list of vendors will eventually be published in the bulletin or on our webpage.

## Intersociety Orchid Display and Workshop — 6th and 7th August 2022, in Busselton.

ISODW Venue: Churchill Park Hall, corner of Brown and Adelaide Streets in Busselton

Dinner Venue: RSL Hall, 10 Rosemary Drive, Busselton (Saturday 6th August, drinks from 6:30 pm)

The Intersociety Orchid Display and Workshop will be the biggest event on the WA orchid calendar this year. These events are always good fun and provide an opportunity to see lots of orchids and mingle with lots of other West Australian orchid growers.

There will be a plant competition and a display competition and OSWA will be competing in both. So, we need plants for the competitions and helpers to organise the plants and set up the display.

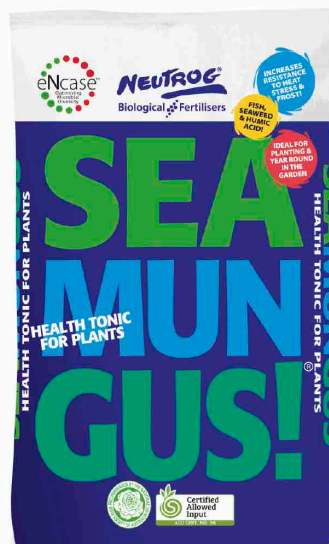
**If you intend to go to Busselton for the ISODW and can help with OSWA's participation, please advise Harry or Lina asap.**

If you haven't booked accommodation for this event yet, see the April bulletin for info about the accommodation recommended by Barbara Burnett. Since it is a bit of a drive to Busselton, accommodation for at least the nights of Friday 5th August - Sunday 7th August is recommended.

One of the highlights of the **ISODW is the dinner**, which is a great opportunity to get to know orchid growers from other clubs and other parts of WA. The cost is only \$40 per person. The menu includes an *Entrée* (cream of vegetable soup finished with cream served with fresh bread rolls), *Main Course* (your choice of breast of chicken filled with herb mousse, oven baked and served with thyme and white wine sauce *OR* seasoned roast leg of lamb with rosemary and garlic sauce, both served with gourmet potatoes and a medley of fresh vegetables) and *Dessert* (chocolate and Cointreau cheesecake with strawberry sauce and whipped cream).

**Let Harry know if you wish to attend the dinner. Booking and payment for dinner must be done by the June General Meeting.**

**SEA**  
more  
from  
your  
garden  
all year  
round.



Seamungus is a fantastic product that is suitable throughout your garden.

A garden that receives a regular feed of fertiliser through every season ensures that your plants have access to the nutrients they need, as soon as they need them.



The potent combination of ingredients in Seamungus, including three different types of kelp, along with poultry manure and humates will improve your soil and the resilience of your plants to stress.

Seamungus is available as both pellets and liquid.



Year round  
fertilising for  
year round  
health



NEUTROG®  
Biological Fertilisers

Freecall 1800 65 66 44 [www.neutrog.com.au](http://www.neutrog.com.au)

## OSWA Marketplace

If there is any orchid or orchid-related item that you would like to buy or sell, let Murray know and he will include details of your request in the next Bulletin.

### Wanted — *Cattleya* Burdekin Bells

If you a plant or a piece of a plant of *Cattleya* Burdekin Bells to spare, please contact Nantha Lingam.

### For Sale — Glass House

Raye McIntosh no longer needs her glass house and is offering it for sale for \$700.

- Aluminium frame with glass panels
- 3.3 m long x 2.6 m wide, with sliding door
- Walls are 1.4 m high and the peak of the gable roof is 2.4 m high.
- Glass house is designed so that it can sit on a foundation made of bricks or limestone blocks (it currently is sitting on limestone blocks that raise the peak of the gable to 2.7 m high).
- Roof includes two windows, ~ 1.5 m x 0.6 m, which open and close easily.
- Includes galvanized mesh bench (0.8 - 0.9 m wide, along all walls) in good condition
- Includes pipes for overhead watering.

The aluminium frame is designed to accept 3 mm corflute (that white corrugated plastic sheet that is popular for making those annoying road-side advertisements for candidates at election time) as a layer of insulation against the inner walls of the glass panels. The glass panels are whitewashed but the whitewash can be scraped off. One glass panel is broken but can easily be replaced. The buyer will need to dis-assemble the glass house. That's probably a two-person job, but manageable with simple tools. If interested, call Raye (9337 2823).



### CYMBIDIUM CULTURAL NOTES (MAY/JUNE 2022) based on notes from Roy Brown

During May some of the early flowering Cymbidiums will be in flower. Others will have flower buds showing through the protective sheaths on the stem. Once they reach the stage where flower buds are visible, it's time to move the plants out of the shade house and into the flowering house, where more protection can be given them. Heavy rain or hail can chip the soft buds and leave a permanent mark. Also strong winds can cause the leaves to rub on the flower and this too will cause a blemish. Cymbidiums like to grow in a position where there is plenty of free air movement, so don't completely

enclose the flowering house like a glass house. This could be the reason for bud drop. Give them overhead protection from the heavy rain and also close off the sides that face the strongest winds. Don't overcrowd your plants, if possible give them plenty of room between each pot. By the end of May we can expect cold, wet wintery weather. Watering will depend on the weather but don't let the pots become dry, particularly those in spike and those under cover. Keep the shade house and flowering house well baited with Baysol pellets for slugs and snails, particularly now that flower buds are showing. If you are using Strike Back for Orchids pellets or liquid, continue your regular feeding program for your cymbidiums, but reduce the rate and frequency of application, because the plants are growing more slowly as the weather gets colder. If you have been using a high nitrogen fertiliser, you should now switch to a high potassium fertiliser (such as Strike Back for Orchids) to encourage strong flowering.

#### **CATTLEYA CULTURAL NOTES (MAY/JUNE 2022) based on notes from Henry Eaton**

Autumn weather has at last been established with cool nights and warm days. This has meant that plants that flower in the autumn have begun to do so with plenty of blooms. As always, culture of your plants will be dependent on the prevailing weather. Because of the cold there will be a slowing of activity in the plant, so watering needs will lessen and fertilising can be further reduced from last month. The Strike Back for Orchids fertilisers (pellets or liquid versions) are good choices because their high potassium content will encourage strong flowering.

Now is not a good time for repotting unless the mix in the pot has deteriorated badly, or new roots are being formed over the edge of the pot. In the latter instance, an alternative is to place the whole plant in a larger pot without disturbing the mix, and fill the remaining space with moist, fresh mix. Repotting can then be completed in the spring. The other method is to place a pot full of mix beneath the roots spilling over so they can establish themselves and not be air pruned, as would otherwise occur. As the intensity of the sun now declines, all shading can be removed and the plants will benefit from the increased light and warmth. To protect the flowers from spotting with Botrytis, try and maintain a good flow of air around the plants by hanging them up or having a fan blowing gently over them. The flowers also need protection from snails and slugs by placing baits in the pots and near the flower sheath. Also keep water off the flowers by hand watering into the pot and growing the flowering plants where they are out of reach of the rain. After flowering, plants can be grown in an area where they can experience a rest period during which they receive little or no water, until they show signs of activity again with the appearance of new roots or a swelling of the bud at the base of the pseudo bulb.

#### **PAPHIOPEDILUM CULTURAL NOTES (MAY/JUNE 2022) by Trevor Burnett**

The growing conditions this month are similar to last month, and as the conditions cool, reduced watering will be necessary. I personally reduce my watering further to once every 10 days, but am always mindful that we could still get some of those unexpected hot days, when watering may have to be adjusted. We would need to get 3-4 hot days in a row before I would adjust my watering programme. We should be seeing a good proportion of our plants now producing spikes. The early flowering types will be well advanced and should be staked to prevent twisting and breakage, as the spikes will be soft and not fully set to support the flower. The plant's growth will have started to slow considerably on the flowering plants, as all the effort is now being channelled into supporting the flowers. If you have been using a high nitrogen fertiliser to encourage plant growth, you will need to switch to a fertiliser with less nitrogen and more phosphorus and potassium, to improve the strength and quality of the flowers. If you routinely use Strike Back for Orchids (pellets or liquid), just keep fertilising as you did last month, since Strike Back has a relatively high levels of phosphorus and potassium. The smaller, un-flowered plants will still require a fertiliser at one quarter or half strength, on a fortnightly or monthly basis, to keep the growth moving forward. With more buds appearing weekly, continue staking plants using meat skewers, wire stakes or thin bamboo canes. If you decide to use wire, ensure the top is turned over to help protect your eyes from getting poked when working with the plants. If you are moving plants to a different area to flower, ensure they are returned to the same orientation to the light source as in the original location. Turning plants can cause flower stems to become twisted, spoiling the effect if you wish to enter them in the various shows. My tip for the month is: if you are growing the plants without heat during the winter (as I do), keep the plants drier than usual, as wet, cold conditions are often fatal to roots.

**Minutes of the General Meeting of the Orchid Society of WA (Inc.), held in the  
Manning Activity Centre, Manning, on 22 April 2022.**

**Welcome:** 7:33 pm

**Attendance and apologies:** as per register

**Minutes:** Moved Nantha L seconded Alan R that the minutes of the previous meeting be accepted. Carried.

**Presentation: Adrian Jose on Species Orchids**

**New members:** Linda Gooding, Marian McFetridge, Karina Wheelock

**Correspondence:**

- 25/3- from Neutrog re the investment opportunity
- 27/3- received OWA meeting documents
- 28/-3 correspondence with Shaun Hoffman from EziFlo regarding presenting on fertigation at an OSWA GM
- 30/3- received email from GCA regarding the "Treebilee"
- 31/3- received Australian Orchid Foundation newsletter. The 2022 Essay competition topic is very relatable- "Too many orchids: Managing space and addiction"
- 1/4 – to Neutrog indicating we do not make purchases on credit and so do not require a credit limit
- 4/4- placed order from Rosella for several club plants
- 5/4- report from OWA meeting that NDOS will apply to have the AOC conference and international flower festival in 2024 in conjunction with the conservation group
- 19/4- booked Bentley Pines for Christmas dinner, November 9<sup>th</sup> 7pm
- 19/4- received documents for the ISODW including menu for dinner- \$40 pp

**Business arising from correspondence:** Nil

Moved Harry A, seconded Helen S that the correspondence be accepted. Carried.

**Reports:** Nil

**Financial report:** Presented by Sheelagh Harman

**Business arising from the financial report:** Nil

Moved Sheelagh H seconded Lynn B that the financial report be accepted. Carried.

**General Business:**

- **Orchid Judging** – Maxine highlighted the need for new student judges for the Orchid Judging Panel of WA. Maxine highlights that this is a highly rewarding endeavour and that the qualification is recognised worldwide.
- **OSWA VCR:** Can anyone convert to DVD? > Alan R to attempt to convert
- **Financial members** – we've had a few bank deposits from unidentified members. I'll email non financial members to clarify if you were one of these- please let us know so we can update your membership status
- **Bark orders** – do we need to order Orchidata? Membership happy with EziGro bark. Still medium Orchidata in the shed for anyone who wants it
- **Shed cleanup-** Planned for April 30<sup>th</sup> at 2pm.
- **Intersociety Orchid Display and Workshop in Busselton-** We will be participating in the ISDW which will take place in Busselton this year. We are' planning on staying at Bayview Geographe Resort Busselton. If you say you're with OSWA when booking, hopefully they will put us close together.
- **Ian Duncan donation** – Murray noted that Ian Duncan's family has kindly donated a number of orchid related stakes etc – see Murray if interested
- **New Grower Incentive Scene Participation** – new OSWA members are encouraged to bench plants at our monthly meetings. Members in the second, third and fourth year as OSWA members collect points from benching plants, and at the end of the year the grower in each year with the most 'points' will be awarded a quality, flowering sized plant from the OSWA stockpile.
- **Events calendar 2022:** Koi Society Show, Sunday June 5<sup>th</sup> 10am-2pm; Intersociety Orchid Display and Workshop- Busselton RSL Club, August 6<sup>th</sup> and 7<sup>th</sup> in Busselton; Kardinya Spring Show– Kardinya Park Shopping Centre, August 30<sup>th</sup>- September 3<sup>rd</sup>; Potting Workshop –Manning Activity Centre Sunday October 16<sup>th</sup>; Perth Garden Festival – October 27<sup>th</sup>-30<sup>th</sup>; Christmas Dinner at Bentley Pines – November 9<sup>th</sup> 7pm; Late Flowering Orchid Display – November 12<sup>th</sup> and 13<sup>th</sup>; Home visits? Nursery visits?

**Raffle:** Tara and Glyn were given their plant prizes from the March meeting. This month raffle winners were Merrill Brechin, Lynn Brooks, Courtney Rogasch, Chris, Philip. We owe 5 plants from EziGro at the next OSWA meeting, to Helen Stretch, Ann Davis, Glynn Fathers, Tara Peters.

**Open popular vote:** Courtney Rogasch with *Miltonia x bluntii*, a fabulous naturally occurring hybrid between *Miltonia spectabilis* and *Miltonia clowesii*. Courtney obtained this plant as a small plant with 2-3 growths in August 2013. Since then the plant has been split 2-3 times. The plant definitely loves the conditions it's growing in. Courtney reports that he grows this plant and his zygopetalums under 70% UV protection shade cloth, in an area that does not get a lot of direct sun. This area is shadier than where he grows his other orchids.

**Novice popular vote:** Lynn Brooks with *Cymbidium* Yellow Elf, a lovely bright yellow early flowering cymbidium hybrid. Lynn 'dressed' this orchid- lowering foilage by running a tag along the underside of the leaf. Lynn noted that the flowers were buried in the foilage when they first opened, and by lowering the foilage was able to better present the flowers.

**Door Prize:** Merrill Brechin

**Meeting Closed** at 9:25 pm

**MONTHLY PLANT COMPETITION (APRIL 2022)**

**OPEN**

1B	(2)	2	Malcolm Davis	<i>Laeliocattleya</i> C G Roebling Blue Magic
		2	Valerie Cooper	<i>Cattleya</i> Portiata Mel
1C	(2)	1	Tara Peeters	<i>Cattleya</i> Unknown
		2	Tara Peeters	<i>Cattleya</i> Unknown
1E	(1)	1	Tara Peeters	<i>Laeliocattleya</i> Golden Wax
1F	(1)	1	Tara Peeters	<i>Cahuzacara</i> Lucerito de Oro
4A	(1)	1	Harry Ashton	<i>Dendrobium schneiderae</i>
6D	(2)	1	Courtney Rogash	<i>Miltonia x bluntii</i>
		2	Merril Brechin	<i>Miltassia</i> Charles M Fitch
7B	(1)	1	Harry Ashton	<i>Den.</i> Chrisfinitia Green Lantern
8A	(3)	1	Courtney Rogash	<i>Dendrobium bigibbum</i> (CC2 Linebred species)
		2	Harry Ashton	<i>Dendrobium bigibbum</i>
		3	Malcolm Davis	<i>Den. bigibbum</i> Dark Beauty x <i>Den. bigibbum</i> Brian's White
10A	(1)	1	Courtney Rogash	<i>Zygopetalum mackayi</i>
11A	(1)	1	Harry Ashton	<i>Phragmipedium</i> Pink Panther

**NOVICE**

11B	(1)	1	Enid Chelva	<i>Zygopetalum</i> Unknown
16D	(1)	1	Lynn Brooks	<i>Cymbidium</i> Yellow Elf
18C	(1)	1	Enid Chelva	<i>Dendrobium</i> Unknown
20B	(1)	1	Enid Chelva	<i>Oncidinae</i> Unknown
21A	(1)	1	Lynn Brooks	<i>Haraella retrocalla</i>



Open Popular Vote  
*Miltonia x bluntii*  
 Grown by Courtney Rogasch



Novice Popular Vote  
*Cymbidium* Yellow Elf  
 Grown by Lynn Brooks