

THE WESTERN AUSTRALIAN ORCHID BULLETIN

THE OFFICIAL JOURNAL OF THE ORCHID SOCIETY OF WESTERN AUSTRALIA
FOUNDED 1946. A MEMBER OF THE AUSTRALIAN ORCHID COUNCIL.

VOLUME 64 No 4



MAY/JUNE 2024

The *next two meetings* of the Orchid Society of Western Australia (Inc.) will be held at the Manning Senior Citizens Activity Centre, Manning, on
Friday 24 May and Friday 28 June, 2024.

PATRON: Mr. Courtney Rogasch

PRESIDENT

Annette Gelfi
Ph. 0402 659 830

SECRETARY

Harry Ashton
orchidsocietywa@gmail.com
Ph. 0412 403 696

TREASURER

Sheelagh Harman
sheelagh4@bigpond.com

REGISTRAR TEAM

Enid Chelva and Alan Rowe

BULLETIN EDITOR

Murray Baker

SOCIAL MEDIA

Kirsty Bayliss

POSTAL ADDRESS

58 Gladstone Rd
Leeming 6149

www.orchidsocietywa.net.au

www.facebook.com/orchidsWA

www.instagram.com/orchidsocietywa

MEETING TOPICS

FRIDAY 24 MAY

JOEL PITMAN

SPECIALIST ORCHID GROWING

FRIDAY 28 JUNE

JANE TEMPEST

GROWING ORCHIDS FROM SEED

OTHER MEETING DATES

OSWA Committee: Friday 7th June
Friday 5th July

General Meeting: Friday 26th July

INSIDE THIS ISSUE

General News	2-3
OSWA-branded clothing	4-5
General Culture Notes	6
Culture Notes for Cyms, Catts, Paphs	6-8
Minutes	8
Monthly Plant Competition	9-10
Autumn Show Results	11-12

General News

Birthdays

May: 1st Katia Stefanova; 4th Jacqui Bateman; 7th Dorothy Walton; 8th Calvin Hisco; 9th Ellen Dixon; 10th Colleen Cortenbach; 26th Ruchie Pototanon

June: 2nd Tom Seaman; 10th Val Dobrowolski; 17th Maggie Longmore; 18th Bev Ruello; 23rd Donna Cardinal

July: 1st Kevin Butler; 9th Stephanie Williamson; 25th Jonathon Thomhon

Best wishes to anyone else celebrating Birthdays or Anniversaries. To any member on the sick list, we wish you a speedy recovery & may you soon be well.

From June 2024 onwards, an entry fee of \$2 will be charged for un-financial members at general meetings to cover costs.

Please take notice of this item and make sure you are a financial member of OSWA to avoid angst on arrival at the next OSWA general meeting!

Your membership subscriptions are put towards various expenses in OSWA:

- insurance (for members participating in OSWA-related activities and public liability insurance);
- hire of the Manning Senior Citizens Activity Centre (OSWA pays a fee of several hundred dollars each year, plus \$1 per attendee at every meeting or event we hold in the Centre);
- *Orchids* magazine (from the American Orchid Society);
- *Orchids Australia* (magazine from the Australian Orchid Council);
- affiliation fees to the Australian Orchid Council and Orchids WA;
- judging fees at monthly meetings and shows;
- club plants and raffle plants;
- office supplies and postage (e.g. for the bulletin);
- costs of hosting our website;
- kitchen supplies at the Late Flowering Orchid Show;
- and so on and so on.

Furthermore, members benefit from the fruits of labour of committee members, who spend much time keeping OSWA running smoothly, representing OSWA, planning activities, and purchasing plants, pots, tags, and other orchid-related paraphernalia at special prices that are passed on to members.

Membership subscriptions (\$21 single, \$26 couple/family) are due on 1 November each year. At the time of printing of this bulletin, a significant number of members have not paid their subscription that was due on 1 November 2023. If you are unsure whether you have paid your subscription or not, you should be able to check your records to find out—you should have been issued a receipt or you will have a record of a payment to OSWA in your bank statement. To be fair to members who *have* paid their subscriptions, starting at the June 2024 general meeting, **members who are in arrears will be asked to pay a \$2 admission fee at each monthly meeting.** Of course guests are always welcome to attend a few meetings free of charge.

Thank You!

National Volunteer Week is 20th - 26th May. I'd like to say a huge THANK YOU on behalf of OSWA to all our volunteers, without whose efforts we wouldn't have a Society.

— Annette Gelfi

National 20-26 MAY 2024
Volunteer
 Something for Everyone **Week**

Thank you to all who helped out at our Flinders Square Autumn Show. It was our second autumn show at Flinders Square and it was a great success again, even though the long hot summer may have caused our show and display to be a little smaller than last year. The sales table was well stocked and sales ticked over nicely. Most importantly, there was a lot of support from members to ensure that we had a full roster of folks on duty at all times to watch over the display, supervise plant sales, and chat with the public. Special thanks go to Lina, Jacqui, and Annette who took time off from the show to represent our club at Bunnings Claremont on the Thursday night.

Over the coming 6 weeks...

At our **May meeting**, our guest speaker will be **Joel Pitman**, a Perth orchid enthusiast and skilled grower of some uncommon species. We're sure to learn something new and perhaps see some orchids we haven't seen before during his presentation. At our **June meeting**, OSWA member **Jane Tempest** will be talking about growing orchids from seed. Jane has been honing her skills in this area for a couple of years now, with much success.

The reason you are reading about both the May meeting and the June meeting now is that the Bulletin Editor will be away for most of June, so **there will be no Bulletin published in June**. Put the June meeting in your calendar now, because you won't be receiving a bulletin in June to remind you then, and the Bulletin Editor will not be able to receive emails asking "where is the bulletin this month?". 🤖

Quality Plant Auctions

At the time of printing, no plants had been offered for auction this month, but it is not too late to bring a plant for auction! The "rules" for these auctions: quality plants, preferably large specimens, no commissions taken by OSWA, payment arranged directly between the buyer and the vendor. Please advise Harry before the start of the meeting if you will offer a plant for auction. At the March meeting, a *Zygopetalum* from Ray Taylor was won by Marian for \$30. A *Compendium of Miniature Orchid Species* was won by Donna \$70. Yes, Donna's auction win was not a quality plant, but rather a quality two-volume set of books. If you are disappointed that you missed out, you can buy yourself a set (used) from www.abebooks.com for US\$772.72 (plus \$53.28 shipping from Germany to Australia).

Farewell Lynn Brooks

Lynn, very active in OSWA for many years and very noticeable in her predominantly red attire, will not be at our meetings, at least for a while. Early this month, Lynn headed off to Thailand, where she will be living for the foreseeable future, and of course continuing her orchid hobby. Thank you Lynn for your work for our club, your enthusiastic contributions at meetings, your sometimes contrary but always thought-provoking ideas, and your bright colours! We wish you all the best on your grand adventure.

Free stuff — microphone stand and speaker stand — old but still good!

OSWA has a microphone stand and a speaker stand. As far as I know, these items were purchased with our previous sound system (not our current one) but have never been used. Both items are sturdy and in mint condition. The microphone stand has a clamp that should clasp any hand-held microphone and can be adjusted to hold said microphone at a height suitable for any person up to about 2 metres tall. The speaker stand is very robust and can hold a speaker (like the one we use at meetings) at heights from 1.5 to 2.5 metres. A mechanically-inclined person could adapt these items for other purposes. If interested in either or both of these items, let Murray know ASAP.

Events calendar 2024

- **Perth Orchid Fair:** Setup Friday 6 September, show 7-8 September, OSWA involvement TBC
- **OSWA Spring Championship Show at Kardinya:** TBC
- **Potting Workshop:** Sunday 13 October
- **Late Flowering Orchid Display:** Setup Friday 8 November, display 9-10 November
- **Floraplant visit?**
- **Christmas Dinner at Bentley Pines Restaurant:** Wednesday 9 October (very early Christmas dinner, due to the restaurant being closed for renovations from late October until 2025)
- **December General Meeting:** Friday 13 December (early due to Christmas).

OSWA-branded Shirts, Vests, Hoodies, and Jackets.

Annette has arranged for an order of shirts, sleeveless vests, hoodies, and jackets, in black and monogrammed with an attractive OSWA *Caladenia flava* logo. These items were exhibited at the April meeting and they look great! Prices are very reasonable—the polo shirts are being substantially subsidised. to encourage members to dress to impress at OSWA events!

Polo shirts: \$10 Zip hoodie: \$35 Vest: \$45 Jacket: \$50

Sizing info is summarized below. Be aware that the polycotton polo shirts tend to shrink in the wash. It is recommended that if you wish to order a polycotton shirt, to allow for shrinkage order a size larger than you normally wear. Annette will be bringing samples to the May general meeting for people to look at.

If you would like to place an order, Annette will take orders and collect payments at the May general meeting. Please bring cash for your payment, or be prepared to make electronic payment on the night. Anyone who can't attend the May general meeting are welcome to contact Annette by phone (0402 659 830) or email (auskiwi91@gmail.com) to place an order and make electronic payment.

Polycotton Polo Shirt (Solid Black): \$10

PS33 (men's) PS34B (women's)

Fabric: 60% cotton, 40% polyester

Polyester with cotton back makes this shirt comfortable to wear.

Recommend ordering a size larger as these shirts tend to shrink in the wash.



PS33 - MENS TRUEDRY® SHORT SLEEVE POLO

EASY FIT	XS	S	M	L	XL	2XL	3XL	4XL	5XL
HALF CHEST	51	53.5	56	58.5	61	63.5	66	68.5	71
BODY LENGTH	68/71	70/73	72/75	74/77	76/79	78/81	80/83	82/85	84/87

PS34B - LADIES TRUEDRY® SHORT SLEEVE POLO

MODERN FIT	6	8	10	12	14	16	18	20	22	24
HALF CHEST	43.5	46	48.5	51	54	57	60	63	66	69
BODY LENGTH	60	62	64	66	68	70	71	72	73	74

Polyester Polo Shirt (Black with gold trim): \$10

PS53 (men's) PS54 (women's)

Fabric: 60% cotton, 40% polyester

Breathable mesh panels under arms and on sides.

True to size.



PS53 - MENS TRUEDRY® FASHION SHORT SLEEVE POLO

EASY FIT	XS	S	M	L	XL	2XL	3XL	4XL	5XL
HALF CHEST	51	53.5	56	58.5	61	63.5	66	68.5	71
BODY LENGTH	68	70	72	74	76	78	80	82	84

PS54 - LADIES TRUEDRY® FASHION SHORT SLEEVE POLO

MODERN FIT	8	10	12	14	16	18	20	22	24
HALF CHEST	43.5	46.0	48.5	51.0	53.5	56.0	58.5	61.0	63.5
BODY LENGTH	60.0	62.0	64.0	66.0	68.0	70.0	72.0	74.0	76.0

Zip Hoodie (Black): \$35

FLO3 (men's) FLO4 (women's)

Fabric: Fleece,
80% cotton, 20% polyester



FLO3 - MENS FLEECE FULL-ZIP HOODIE

EASY FIT	XS	S	M	L	XL	2XL	3XL	5XL
HALF CHEST	57.5	60	62.5	65	67.5	70	72.5	77.5
BODY LENGTH	68	70	72	74	76	78	80	82

FLO4 - LADIES FULL-ZIP FLEECE HOODIE

MODERN FIT	8	10	12	14	16	18
HALF CHEST	46.5	49.0	51.5	54.0	56.5	59.0
BODY LENGTH	60.0	62.0	64.0	66.0	68.0	70.0

Vest (Black): \$45

1515 (men's) 2515 (women's)

Fabric: outer, 95% polyester, 5% elastane
inner, 100% polyester bonded fleece

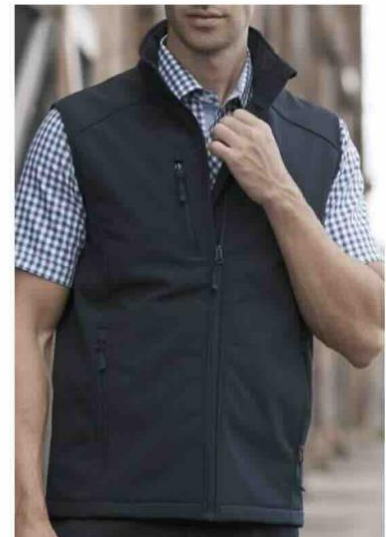
2 side zip pockets, 1 chest zip pocket, water repellant

MENS	S	M	L	XL	2XL	3XL	5XL	6XL*	7XL*	8XL*
1/2 CHEST	54	56.5	59	61.5	64	66.5	71.5	75	78.5	82

variations +/- 1 cm (guide only)

LADIES	8	10	12	14	16	18	20	22	24*	26*
1/2 CHEST	48	50.5	53	55.5	58	60.5	63	65.5	69.5	73.5

variations +/- 1 cm (guide only)



Jacket (Black): \$50 JK15 (men's) JK16 (women's)

FABRIC

290gsm - Bonded Softshell™
shell face: 96% polyester, 4%
elastane, shell back: 100%
polyester.

STYLE

Subtle, stylish and contemporary
Softshell™ jacket. Contrasting polar
fleece inners, Lightweight, water
and wind resistant. Longer back tail
creates extra warmth.



JK15 - MENS SOFTSHELL™ SPORT JACKET

MODERN FIT	S	M	L	XL	2XL	3XL	4XL	5XL
HALF CHEST	57.5	60	62.5	65	67.5	70	72.5	75
BODY LENGTH	70/73	72/75	74/77	76/79	78/81	80/83	81/84	82/85

JK16 - LADIES SOFTSHELL™ SPORT JACKET

MODERN FIT	8	10	12	14	16	18
HALF CHEST	50	52.5	55	57.5	60	63
BODY LENGTH	62/65	64/67	66/69	68/71	70/73	72/75

GENERAL ORCHID CULTURE NOTES FOR MAKURU (JUNE/JULY)

The Orchid Society of Western Australia meets on Noongar country, and would like to acknowledge the Noongar people as the traditional custodians of the land. Unlike the European calendar, the Noongar people describe the climate of Western Australia's South West as having six seasons. This approach to describing Perth's climate is helpful for guiding our orchid-related jobs for the year. Makuru (June/July) is the coldest and wettest Noongar season. Days are short, sunlight is often filtered by cloud cover, and stormy, wet, windy weather is frequent.

- ✓ Watering at this time of the year is best done in the morning, aiming to allow orchids to dry by nightfall. Try to plan watering for clear sunny days.
- ✓ Try to avoid overhead watering/sprinklers at this time of year. Watering by hand ensures control over where cold water goes (not onto flowers or into leaf axils, crowns, sheaths etc). During hand watering you can inspect your plants to identify any potential issues before it's too late.
- ✓ Use rainwater where possible — there's no shortage of it this time of year, orchids love it, and we all have a responsibility to be water-wise gardeners.
- ✓ Any additional shade cloth applied in summer should be removed by now — orchids love as much light as they can get this time of year.
- ✓ If you have a solid cover for your shade house, it should be on by now. Orchids that require a dry winter rest or reduced growth should be kept on the dry side, and given minimal (if any) fertilizer.
- ✓ Apply snail and slug pellets as these critters become more active during rainfall. The expensive, moisture resistant pellets are preferable because they do not disintegrate and go mouldy.
- ✓ Survey your orchid collection for any plants becoming too 'top heavy', that may require extra support to prevent them from toppling over in strong winds.
- ✓ Start thinking about what plants you will have in flower for the up coming Shows and meetings. How can you tidy up the plant, and protect the flowers, to ensure they look their best? A decorative pot, removal of dead leaves, trimming black leaf tips, and using oils or a little milk in water to give foliage a glistening appearance make a big difference for plant presentation.
- ✓ Make sure you have a good supply of pots and orchid mix in preparation for the busy repotting season to come — it is better to have supplies and not need them, than need them and not have them.

The following detailed notes are based on material prepared by Roy Brown (Cymbidiums), Henry Eaton (Cattleyas) and Trevor Burnett (Paphiopedilums), with revisions by Harry. General info on particular types of orchids can be found at http://www.orchidsocietywa.net.au/OSWA/Growing_Orchids.html.

CYMBIDIUM CULTURAL NOTES FOR MAKURU (JUNE/JULY)

During Makuru, the early flowering cymbidiums will be in bloom, and many others will have buds showing through the protective sheaths on the stem. Once they reach the stage where flower buds are visible, it's time to move the plants out of the shade house and into a bright, sheltered position on the patio (or the flowering house if you have one!). Aim to find a position where plants receive shelter from heavy rain that can deform the soft buds, and strong winds that cause the leaves to rub on the flower buds and result in blemishing. Cymbidiums like to grow in a position where there is plenty of free air movement, so try to avoid moving plants in bud indoors or keeping plants in enclosed spaces; this could result in buds dropping. Caring for the developing flower spikes depends on the plant in question. Some cymbidiums look best with the flower spike staked upright, but many arching, pendulous or cascading cymbidiums look best when the flower spikes are allowed to follow their natural presentation. If in doubt, ask an expert at the Club whether you should stake your orchid's flower spike. If a flower spike does require manipulation, do this in the warmest, sunniest part of the day, as cold flower spikes are brittle and snap quite easily. Avoid manipulating the stem too aggressively. Elastic ties or stockings adjusted gradually over a period of days can be used to gently manoeuvre the spike into the desired position. Once the buds have emerged, try not to move or rotate the plant too much. Some cymbidiums will

reorientate their flowers in response to the direction of sunlight, and frequently changing the plant's orientation can cause buds to open at wonky angles.

Watering will depend on the weather but do not let the pots become dry, particularly those in spike and those under cover. If you are using Strike Back for Orchids pellets or liquid, continue your regular feeding program for your cymbidiums, but reduce the rate and frequency of application, because the plants are growing more slowly as the weather gets colder. If you have been using a high nitrogen fertiliser, you should now switch to a high potassium fertiliser (such as Strike Back for Orchids) to encourage strong flowering.

CATTLEYA CULTURAL NOTES FOR MAKURU (JUNE/JULY)

Makuru brings cold wintry weather, and the foremost consideration is adjusting cultural practice to the cold. In ideal culture, cattleyas are grown protected from rain to allow better control of when plants receive water. Most cattleyas will slow down their growth in the cooler weather, and for these plants, the need for watering decreases and fertilizer should be avoided. However, some cattleyas are cold tolerant and will continue to grow throughout winter (putting out new shoots and developing pseudobulbs), and these plants will still benefit from fertilizer, perhaps at a reduced rate compared with the warmer months. Non-fertilizer tonics such as Neutrog's Seamungus can be administered.

In the cold, damp air, winter flowering cattleyas are prone to infection by spores of botrytis, causing brown and black spotting on the petals of flowers. Flowers should be protected from rain and sprinklers, and care should be taken not to splash petals when watering by hand. Botrytis spotting can also be prevented by adequate air circulation, either by hanging plants up high, or, if an enclosed space, keeping air moving gently over the plants with the use of a fan.

After flowering, plants can be grown in an area where they can experience a rest period during which they receive little or no water, until they show signs of activity again with the appearance of new roots or a swelling of the bud at the base of the pseudobulb. Be diligent in removing spent flowers and sheaths, because water can collect in the dead sheaths and cause rot.

The best time to repot a cattleya is when a new flush of roots is emerging, like in the photo here. These roots will establish themselves in the new mix. If flushes of new roots are observed, cattleyas can be repotted, but most cattleyas will not develop a new flush of roots at this time of the year. Generally, winter is not the ideal time to repot unless the mix in the pot has deteriorated badly, or new roots are being formed over the edge of the pot. In the latter instance, an alternative is to place the whole plant in a larger pot without disturbing the mix, and fill the remaining space with moist, fresh mix. Repotting can then be completed in the spring. Another method is to place a pot full of mix beneath the roots spilling over so they can establish themselves and not be air pruned, as would otherwise occur.



PAPHIOPEDILUM CULTURAL NOTES FOR MAKURU (JUNE/JULY)

As the conditions cool, reduced watering will be necessary. I personally reduce my watering further to once every 10 to 14 days, but am always mindful that we could still get some of those unexpected hot days, when watering may have to be adjusted. We would need to get 3-4 hot days in a row before I would adjust my watering programme.

We should be seeing a good proportion of our plants now producing spikes. The early flowering types will be well advanced and should be staked with meat skewers or wire stakes to prevent twisting and breakage, as the spikes will be soft and not fully set to support the flower. The plant's growth will have started to slow considerably on the flowering plants, as all the effort is now being channelled into supporting the flowers. If you have been using a high nitrogen fertiliser to encourage plant growth, you will need to switch to a fertiliser with less nitrogen and more phosphorus and potassium, to improve the strength and quality of the flowers. If you routinely use Strike Back for Orchids (pellets or liquid), just keep fertilising as you did last month, since Strike Back has a relatively high levels of phosphorus and potassium. The smaller, un-flowered plants will still require a fertiliser at one quarter or half strength, on

a fortnightly or monthly basis, to keep the growth moving forward. If you are moving plants to a different area to flower, ensure they are placed with the same orientation to the light source as in the original location. Turning plants can cause flower stems to become twisted, spoiling the effect if you wish to enter them in the various shows.

The months coming are truly wonderful, and most rewarding for the Paphiopedilum growers, especially of the exhibition type clones. We should be flush with flowers with some of our old favourites flowering again, and some new seedlings we have been eagerly awaiting to flower for several years finally producing flowers. Flowers can be left on 2-3 growth plants without harm, as long as the plants are healthy and showing good, strong growths. With smaller plants flowering for the first time on a single growth, not showing signs of a secondary growth, the quick removal of the flowers will facilitate the best growth. This will promote new growths and ensure strong growth and flowers in future years. The flower can be enjoyed as a cut flower for some time.



Paphiopedilum TB Lorna Doone

Notes of the General Meeting held in the Manning Senior Citizens Activity Centre, Manning, on Friday 26 April 2024

Welcome: 7:30 pm

Apologies and attendance: as per attendance register

Presentation: Kevin Butler on Blue Cattleyas. A big thank you to Kevin for joining us to present on this interesting topic! Kevin has been breeding coerulea cattleyas for decades and still has new hybrids coming through at Ezi-Gro orchids.

Report: Jacqui presented on our Bunnings workshop. A big thank you to Bunnings for having us.

General business

1) Autumn Championship Show: at Flinder's Square Shopping Centre, this is coming up (only ONE more meeting until the event!). Roster circulated. Members selling plants requested to prepare paperwork and label plants at home. Members benching requested to label plants and prepare the show entry sheet and entry cards at home. Members requested to bring anything in flower for our display, even if it won't be formally judged.

- **Bunnings Mothers Day event:** 9th May 5-7pm, Lina and Jacqui attending, promoting orchid culture and the society activity
- **OSWA image-wear:** some garments were available for people to try on. Details in the May bulletin.
- **Quality Plant Auctions:** This month's auctions: A Zygopetalum from Ray Taylor, won by Marian \$30. A Compendium of Miniature Orchid Species, won by Donna \$70 (spectacular bargain!)
- **Events calendar 2024:** (see above in this bulletin)

Supper prize: Marian

Open popular vote: Malcolm with Dendrobium Rungroj. Malcolm picked this plant up at a show years ago. This plant gets a bit of everything including Neutrog's Strikeback and Seamungus. At the moment it's getting watered 2-3 times a week, increasing to daily in hot summer weather.

Novice popular vote: Marian with a lovely Cattleya, Cattleanthe Burana Beauty! Mariam bought this as a Polypack from Bunnings. Grown under 70% shade and fertilized weakly weekly (a little more often in summer)

Floral Art: Dawn Fathers with this beautiful creation, 'Beauty and the Beast' (pictured at right).

Door Prize: Marian

Raffle: Julie, Karina, Chris, Tom, Tara, Donna, Samandika, Annette, Margaret, Tara, Betty

Judges Choice: Malcolm with Dendrobium Rungroj Splash 76 pts

Best Cymbidium: Courtney with Cymbidium findlaysonianum 70 points

Meeting closed.



MONTHLY PLANT COMPETITION (APRIL, 2024)

(Plants must have been owned by the exhibitor for at least 6 months prior to entry in Monthly Meetings and Shows)

OPEN

1A	(3)	1	Ray Taylor	<i>Brassavola nodosa</i>
		2	Tara Peeters	<i>Cattleya labiata</i>
		3	Ray Taylor	<i>Schomburgkia undulata</i>
1B	(3)	1	Ray Taylor	<i>Rhyncholaeliocattleya</i> Chief Sunlight 'Yellow Ruby'
		2	Malcolm Davis	<i>Rhyncholaeliocattleya</i> Languedoc 'Singapore Welcome'
		3	Courtney Rogasch	<i>Brassolaeliocattleya</i> Magic Meadow 'Napoleon'
1C	(1)	1	Valerie Cooper	<i>Cattleya</i> Portiata 'Mel'
1D	(1)	1	Malcolm Davis	<i>Brassocatanthe</i> Little Mermaid 'Janet' BM/Jocra
1E	(1)	1	Ray Taylor	<i>Cattlianthe</i> Porcia
1F	(2)	1	Tara Peeters	<i>Cattleya</i> Calummata
		2	Ray Taylor	<i>Rhynchovola</i> Jimminey Cricket 'Super Bug'
2A	(1)	1	Courtney Rogasch	<i>Cymbidium</i> <i>finlaysonianum</i>
4B	(2)	1	Malcolm Davis	<i>Dendrobium</i> Rungroj Splash
		2	Tara Peeters	<i>Dendrobium</i> Yen Fancy
4C	(1)	1	Tara Peeters	<i>Dendrobium</i> unknown
5A	(1)	1	Ray Taylor	<i>Phalaenopsis</i> <i>hieroglyphica</i>
6D	(1)	1	Ray Taylor	<i>Odontocidium</i> Succubus 'Night Shift'
8A	(3)	1	Courtney Rogasch	<i>Dendrobium</i> <i>bigibbum</i> alba
		2	Courtney Rogasch	<i>Dendrobium</i> <i>bigibbum</i> 'CC1' (line bred species)
		3	Harry Ashton	<i>Dendrobium</i> <i>bigibbum</i>
11B	(3)	1	Ray Taylor	<i>Zygoneria</i> (Iron Knob x Pine Road) x <i>Zygonisia</i> Cynosure 'Blue Birds'
		2	Courtney Rogasch	<i>Zygopetalum</i> Artur Elle 'Essendon'
		3	Courtney Rogasch	<i>Zygopetalum</i> Advance Australia
12	(3)	1	Tara Peeters	<i>Cattleya</i> Hawaiian Wedding Song x <i>Laelia</i> <i>gouldiana</i>
		2	Tara Peeters	<i>Rhyncholaeliocattleya</i> Robert Scalia x <i>Cattleya</i> Angel Flare
		3	Tara Peeters	<i>Rhyncholaeliocattleya</i> Rosella Tokyo x <i>Cattleya</i> Hawaiian Wedding Song

NOVICE

15A	(1)	1	Glynn Fathers	<i>Prosthechea cochleata</i> 'Pepe' x <i>Prosthechea cochleata</i> 'Jules & Elaine' AM/AOS
15B	(1)	1	Marian McFetridge	<i>Cattleya</i> unknown
15C	(3)	1	Betty Saul	<i>Cattlianthe</i> Porcia
		2	Marian McFetridge	<i>Laeliocattleya</i> Lois McNeill
		3	John Cain	<i>Cattleya</i> unknown
15D	(2)	1	Enid Chelva	<i>Brassocatanthe</i> Little Mermaid 'Janet' AM/AOS
		2	Marian McFetridge	<i>Cattleanthe</i> Burana Beauty
15E	(2)	1	Enid Chelva	<i>Epidendrum</i> unknown
		2	Enid Chelva	<i>Epidendrum</i> unknown
15F	(1)	1	Glynn Fathers	<i>Rhynchovola</i> Jimminey Cricket 'Super Bug' HCC/AOC
17D	(1)	1	Jacqui Bateman	<i>Paphiopedilum</i> unknown

18A	(1)	1	Dawn Fathers	<i>Dendrobium</i> unknown
18B	(2)	1	Julie Jayatilaka	<i>Dendrobium</i> YaYa
		2	Enid Chelva	<i>Dendrobium</i> unknown
18C	(1)	1	Jenny McLean	<i>Dendrobium</i> Majestic Candy 'Alison'
20D	(3)	1	Jenny McLean	<i>Oncidium</i> Heaven Scent 'Redolence'
		2	Julie Jayatilaka	<i>Brassidium</i> Golden Gamine 'White Knight'
		3	Julie Jayatilaka	<i>Brassada</i> Memoria Bert Field 'Beenak'

FLORAL ART

F2 (1) Dawn Fathers Beauty and the Beast

Judges' choice (Roy Brown Trophy): *Dendrobium* Rungroj Splash, grown by Malcolm Davis, 76 Points

Best cymbidium (Tom Dixon Trophy): *Cymbidium finlaysonianum*, grown by Courtney Rogasch, 70 Points

Open popular vote: *Dendrobium* Rungroj Splash, grown by Malcolm Davis

Novice popular vote: *Cattleanthe* Burana Beauty, grown by Marian McFetridge

Floral popular vote: 'Beauty and the Beast', arranged by Dawn Fathers



Cymbidium finlaysonianum,
grown by Courtney Rogasch



Oncidium Heaven Scent 'Redolence'
grown by Jenny McLean

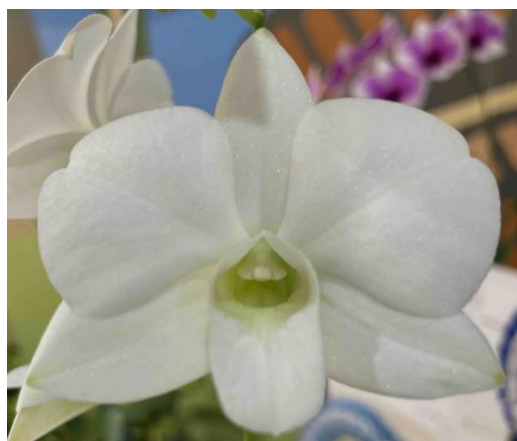
Dendrobium Rungroj Splash,
grown by Malcolm Davis



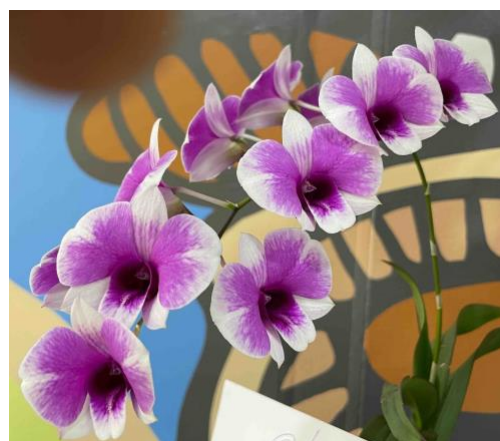
Results of the OSWA Autumn Show, Flinders Square, May 2024.

Best Cymbidium	<i>Cymbidium dayanum</i> (69 points)	Tara Peeters
Best Laeliinae Alliance	<i>Rhyncholaeliocattleya</i> Mitsuo Akatsuka	Shannon Smoker
Best Paphiopedilum	no entries *	
Best Oncidinae	<i>Brassidium</i> Golden Gamine	Helen Stretch
Best Vandeae	no entries *	
Best Phalaenopsis	<i>Phalaenopsis equestris</i>	Harry Ashton
Best Any Other Genera	<i>Phragmipedium</i> Sorcerer's Apprentice	Julie Jayatilaka
Best Dendrobium excl. Aust Native	<i>Dendrobium</i> Yaya	Julie Jayatilaka
Best Australian Native Species	<i>Dendrobium bigibbum</i> var. <i>alba</i>	Courtney Rogasch
Best Australian Native Hybrid	no entries *	
Best Australian Native	<i>Dendrobium bigibbum</i> var. <i>alba</i>	Courtney Rogasch
Grand Champion	<i>Dendrobium bigibbum</i> var. <i>alba</i>	Courtney Rogasch
Reserve Champion	<i>Dendrobium</i> Yaya	Julie Jayatilaka
Best Specimen	<i>Psychopsis</i> Supreme	Shannon Smoker
Best Seedling	<i>Cattleya</i> Hawaiian Wedding Song x <i>Laelia gouldiana</i>	Tara Peeters
Best Species	<i>Dendrobium bigibbum</i> var. <i>alba</i>	Courtney Rogasch
Best Novice Entry	<i>Dendrobium</i> Yaya	Julie Jayatilaka
Best Floral Entry	no entries *	
Most Plants in the Open Section		Tara Peeters
Most Plants in the Novice Section		Julie Jayatilaka

* The prize for best paphiopedilum would have gone to Murray for his *Paphiopedilum gratrixianum*, but, sadly this plant was exhibited under a pergola at the Baker residence rather than at the show! At Flinders Square, four prizes were not awarded due to lack of entries. Did you miss out on a prize too?



Dendrobium bigibbum var. *alba* (Courtney Rogasch)



Dendrobium Yaya (Julie Jayatliaka)



Rhyncholaeliocattleya Mitsuo Akatsuka (Shannon Smoker)



Brassidium Golden Gamine (Helen Stretch)



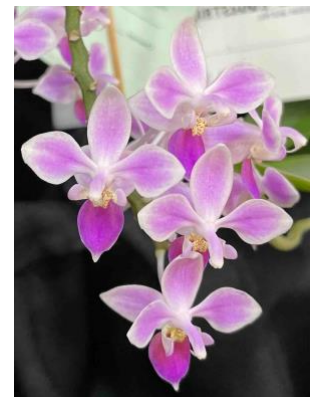
Rhyncholaeliocattleya Chief Sunlight 'Yellow Ruby' (Ray Taylor)



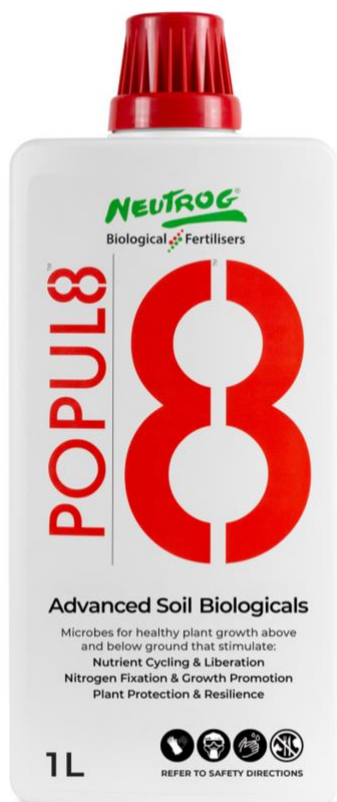
Phragmipedium Sorcerer's Apprentice (Julie Jayatilaka)



Cattleya Hawaiian Wedding Song x *Laelia gouldiana* (Tara Peeters)



Phalaenopsis equestris (Harry Ashton)



SICK, TIRED, STRESSED PLANTS?

POPUL8 is the ideal treatment to help plants recover from signs of stress.

The diverse population of 200 naturally occurring microbes, along with 42 specifically chosen bacteria and fungi in POPUL8, will work to support your plant back to good condition.

And just as important, POPUL8 will also help to build resilience, making for stonger, healthier plants overall.



Freecall 1800 656 644 | www.neutrog.com.au